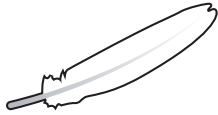


your **T2**
survival guide



z z z z z z z z z z

light & sound

from the phil&teds

adaptability range



welcome to the delightful & adaptable world of phil&teds

our boxes make a great distraction for your kids while you get into the nitty & gritty.

Please read the **WARNINGS** in this book carefully and help us continue improving our adaptability range by returning your warranty form.

bits & bobs

Open your T2 carry bag and check that the following bits and bobs are there

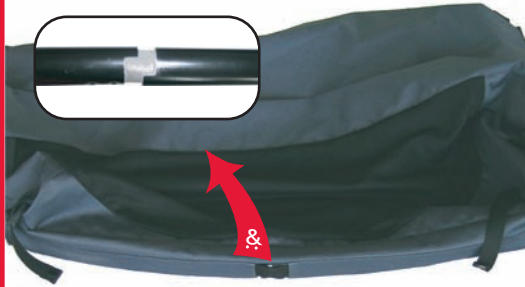
- 1 x T2 travel cot
- 4 x black leg poles (attached)
- 2 x black side poles (attached)
- 4 x black top poles (attached)
- 4 x pegs
- 1 x carry bag
- 1 x inflatable mattress



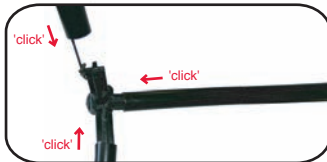
1. Place the top of the cot (zipped mesh part) face down on the ground.
2. Straighten the fabric and lay the leg poles 'a' outwards on the ground.

You are now ready to assemble.

nitty & gritty



1. Locate the two side poles and fit together in the middle. The poles should curve outwards and lie flat.
2. Fit the center joint on the leg poles together in the same way.

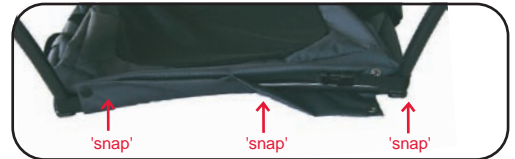


3. Fit the ends of the side poles, end poles and leg poles onto the corner fittings, placing the slots in the poles onto the keys of the plastic corners. Repeat for the other 3 corners.

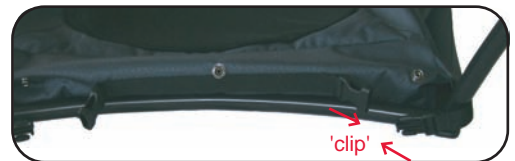
Note: keep the elastic cord clear when inserting a corner piece.



4. Turn the cot onto its leg poles, fix the end of the poles into the corner webbing sockets and do up snap.



5. Connect the four buckles around the top of the leg poles to the end buckles. They should be tight.



6. Snap fasten the end covers over the end poles.



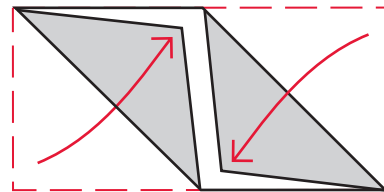
7. Attach the straps on the side of the T2 to the corresponding snap half way up the leg pole.
8. Inflate the mattress by opening the self inflating valve. Manually inflate as desired. Close the valve securely when finished.
9. Unzip the top mesh and place the mattress inside, pressing it into the fabric corners.

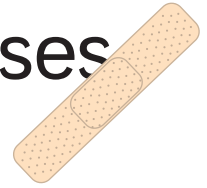
Important: When outdoors anchor the cot to the ground by placing the supplied pegs through the eyelets in the corner webbing.

down she goes

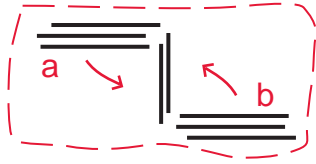
When dismantling, the cot goes in the bag first, then the mattress. It does sound tricky, but once you've done it it will seem very easy...trust us!

1. Remove the mattress from the cot, undo the valve and zip up the mesh top.
2. Undo all the clips (if you wish) and the 'snaps' on the leg poles.
3. Undo all poles from corner fittings one corner at a time, and then pull apart the long side poles and leg poles.
4. Each pole will now be approximately the same length and the cot will essentially be flat on the floor, in a rectangular shape.
5. Fold the bottom left corner up to the middle then fold the top right corner down to the middle.

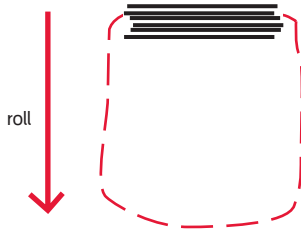




6. Push the bunches of poles 'a' and 'b' together.



7. With both hands lift the bunch of poles allowing the excess fabric to hang below.
8. Role the poles into the fabric.



9. Fold the mattress in half (short end to short end), then twice more in the same direction so the mattress is 6 layers thick, squeeze the air out and close the valve. The mattress will then fit in the bag on top of the cot, or convert into an origami swan if you're in the mood.

the once over

Check the T2 for cuts & bruises. If your T2 is damaged in any way, or you are not sure how to use it, contact your retailer immediately.

The fabric on your T2 is highly water resistant, but zips and seams can leak.

caring for the T2

unlike children, your T2 likes to stay clean.

- Dry your T2 thoroughly before storing.
- Remove dry dirt with a soft brush.
- Do not wash with soap, solvents, bleach, or detergents. (These may harm the fabric).
- Store in a well ventilated space, away from moisture and direct sunlight (which can harm and fade your T2's colourful coat).



e3™



metoo™



snuggle & snooze

adapt & survive!



smartbuggy™



tott



metro

rights & remedies

our warranty and service policy

We want to give owners confidence in the quality of our products. They are warranted against defects in materials and workmanship for one year from the date of purchase.

If the product has a manufacturing fault we will repair it free of charge. If it's not practical to repair it we will, at our discretion, replace the part in question*. If the product fails due to wear and tear, accident, neglect or negligence, or is outside the one year warranty, we will happily repair it for a reasonable charge.

details of warranty

Who is covered? The original purchaser buying new product from an authorised dealer. Proof of purchase is required.

What is covered? Workmanship or materials that are deemed faulty, providing the T2 has, at all times, been used in normal conditions and been properly maintained in accordance with the instructions.

What is not covered? Second hand product. Modified product. Poorly maintained product. Normal wear, fading and fabric cuts.

Improper use (including but not limited to): abnormal use; not following instructions; child left unattended; safety harness not used; excessive load; transport damage i.e. airline or cargo damage.

Customer costs within warranty. The customer is responsible for any inwards freight charge to return the product to the manufacturer, or its representative, for warranty and or service.

Customer costs outside of warranty. Where proof of purchase is not provided or the product is outside of the one year period, the manufacturer (or agent) reserves the right to charge a service fee and/or charge for parts replaced/repaired. A return freight charge may apply.

Exclusions. Any consequential loss or damage to any person or property resulting directly or indirectly from use of the product.

Who do I contact? Please discuss any warranty or service queries with your store of purchase. You will be required to show proof of purchase. They will inform you of the next step.

* The consumer may have additional rights in some countries



return & relax warranty form

phil&teds

Name

Address

Phone

Email

Just a few extra details to help us adapt & survive!

Your age?

under 25 25-34 35-40 40+

Number of children

1 2 3 3+ soon!

Their ages

How did you hear about us?

Which most excellent product did you buy?

- | | | |
|-------------------------------------|------------------------------|----------------------------|
| <input type="radio"/> e3 twin | <input type="radio"/> bebe | <input type="radio"/> e3 |
| <input type="radio"/> smartbuggy | <input type="radio"/> metro | <input type="radio"/> T2 |
| <input type="radio"/> accessories | <input type="radio"/> metoo | <input type="radio"/> tott |
| <input type="radio"/> e3 double kit | <input type="radio"/> escape | <input type="radio"/> pepe |

Date of purchase / /

Rate from 1-10 how likely you would be to recommend this product to someone else?

1 2 3 4 5 6 7 8 9 10

Why?

Any general suggestions?

Can we inform you of new products and specials? yes no

www.philandteds.com

affix
stamp
here

phil&teds

102-112 daniell street
newtown
wellington 6002
new zealand

warnings

Please follow these instructions. Injury may result if you do not follow these safety precautions. Injury may result from improper use.

WARNING: Before each use, make sure your cot is correctly assembled. Incorrect assembly may affect your child's safety.

WARNING: Do not use your T2 if any part is broken, torn or missing.

WARNING: Make sure children are clear of the immediate area before erecting or adjusting the T2.

WARNING: Do not use the T2 near a heater, cooking device or exposed flame.

WARNING: Ensure your T2 is placed a safe distance from curtains, blinds, heaters and power points. Take special care that medication, string, elastic and small toys or items such as coins are out of reach from any position in the T2.

WARNING: Ensure your child doesn't climb out of the cot; injury may result from your child falling from the cot.

WARNING: Do not leave anything in the cot which could provide a foothold, or present a danger of suffocation or strangulation.

WARNING: Do not modify the T2 or use accessories not designed for it.

WARNING: The mattress for your T2 should be 500mm wide, 1200mm long and no more than 30mm thick. Using the wrong size, thickness or an extra mattress may create hazardous gaps that could result in suffocation or reduce the height of your T2, which may result in your child falling from your T2.

WARNING: When outdoors always use the pegs supplied to secure the cot to the ground.

adapt & survive!™

head office +64 (4) 380 0833
fax +64 (4) 380 0137
address 102-112 daniell street
wellington new zealand
visit www.philandteds.com

Phil & teds most excellent buggy company ltd. (phil & teds), the phil & teds logo, the shapes and designs of the products and the adapt & survive logo are global trademarks of Phil & Teds New Zealand Limited. Phil & Teds New Zealand Limited is the owner of all past, present and future intellectual property used and developed in relation to its business and reserves all rights in relation to its intellectual property and the presentation of it. © Phil & teds most excellent buggy company ltd.