

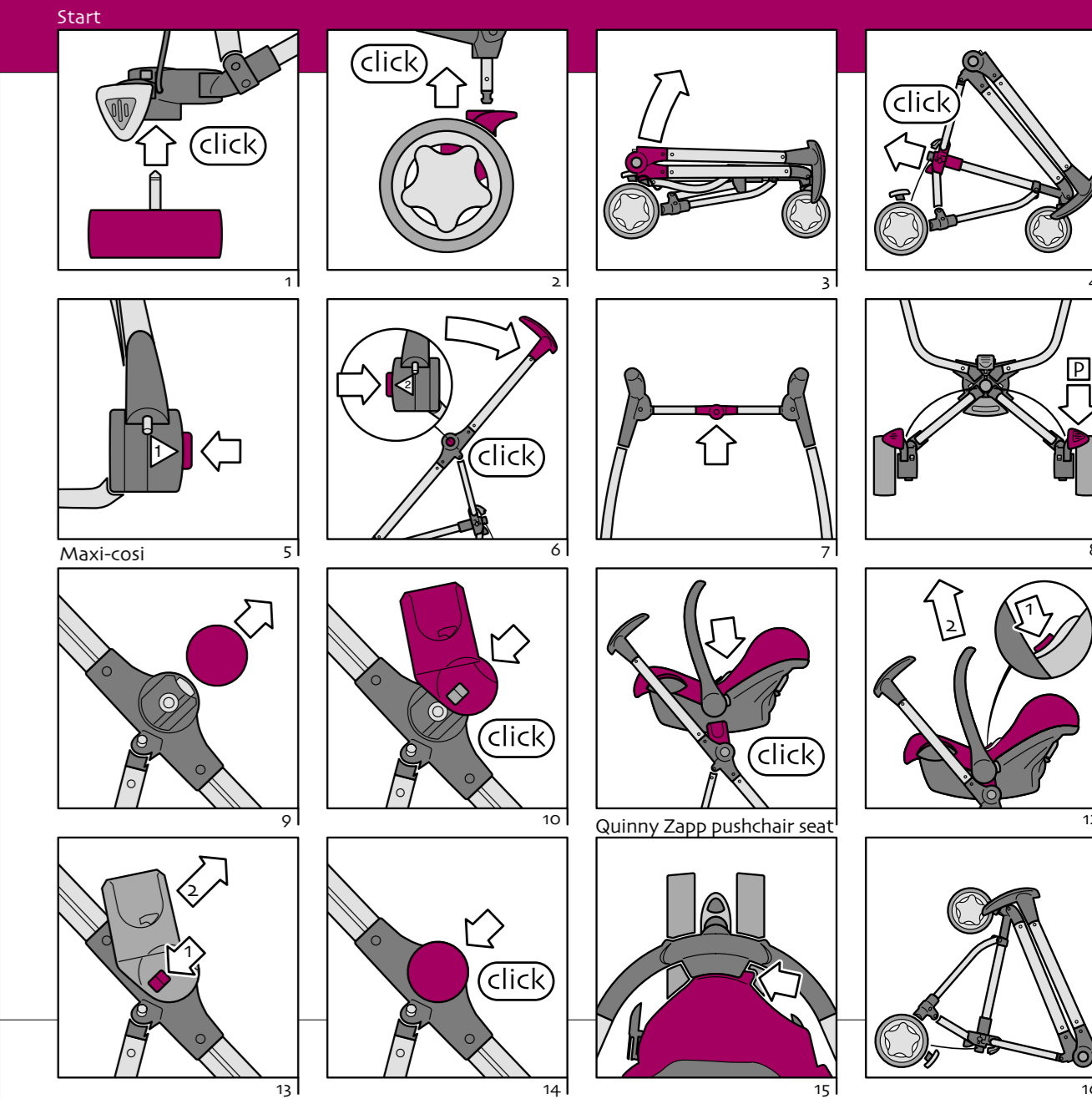


Quinny®  
zapp

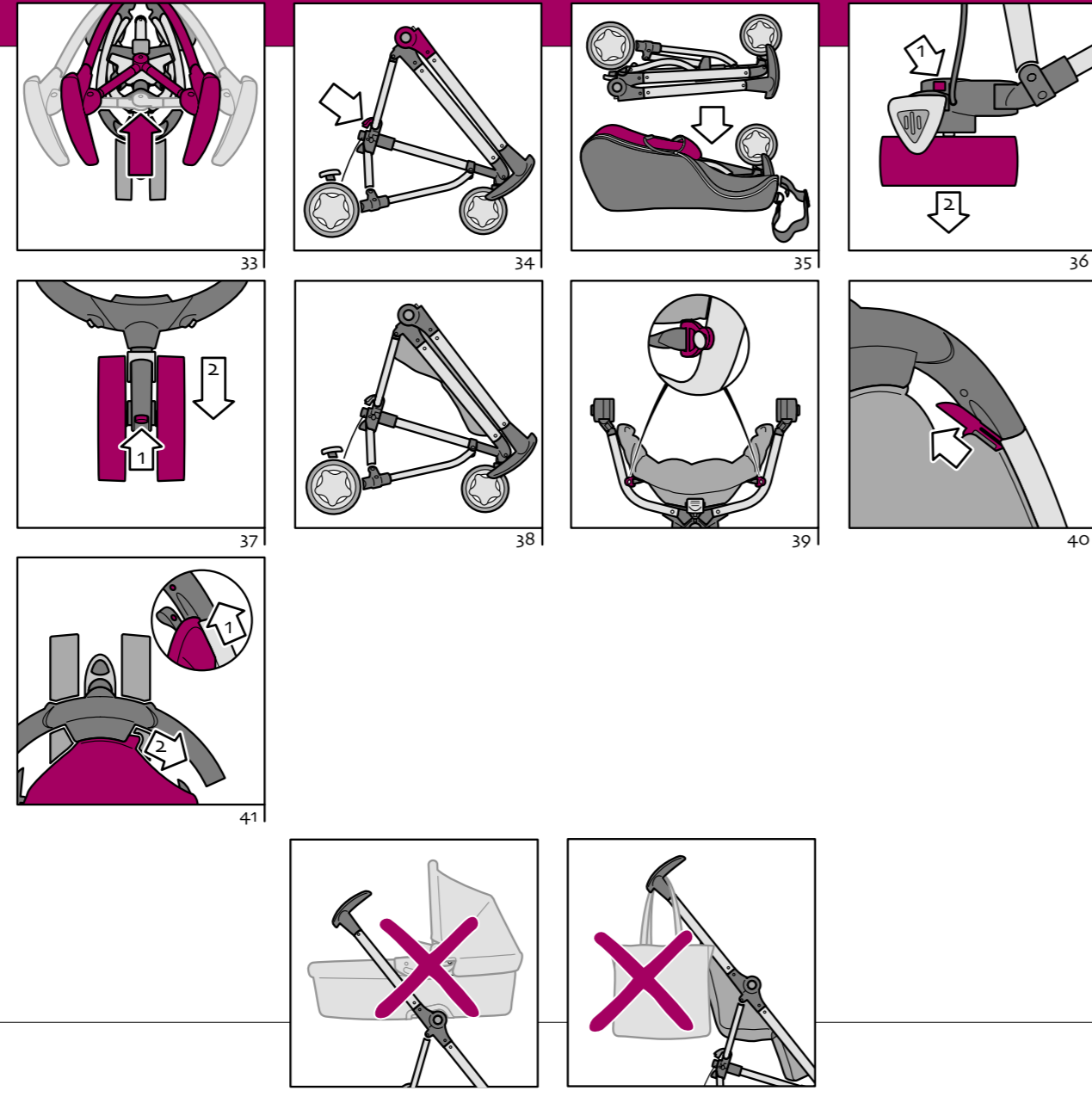
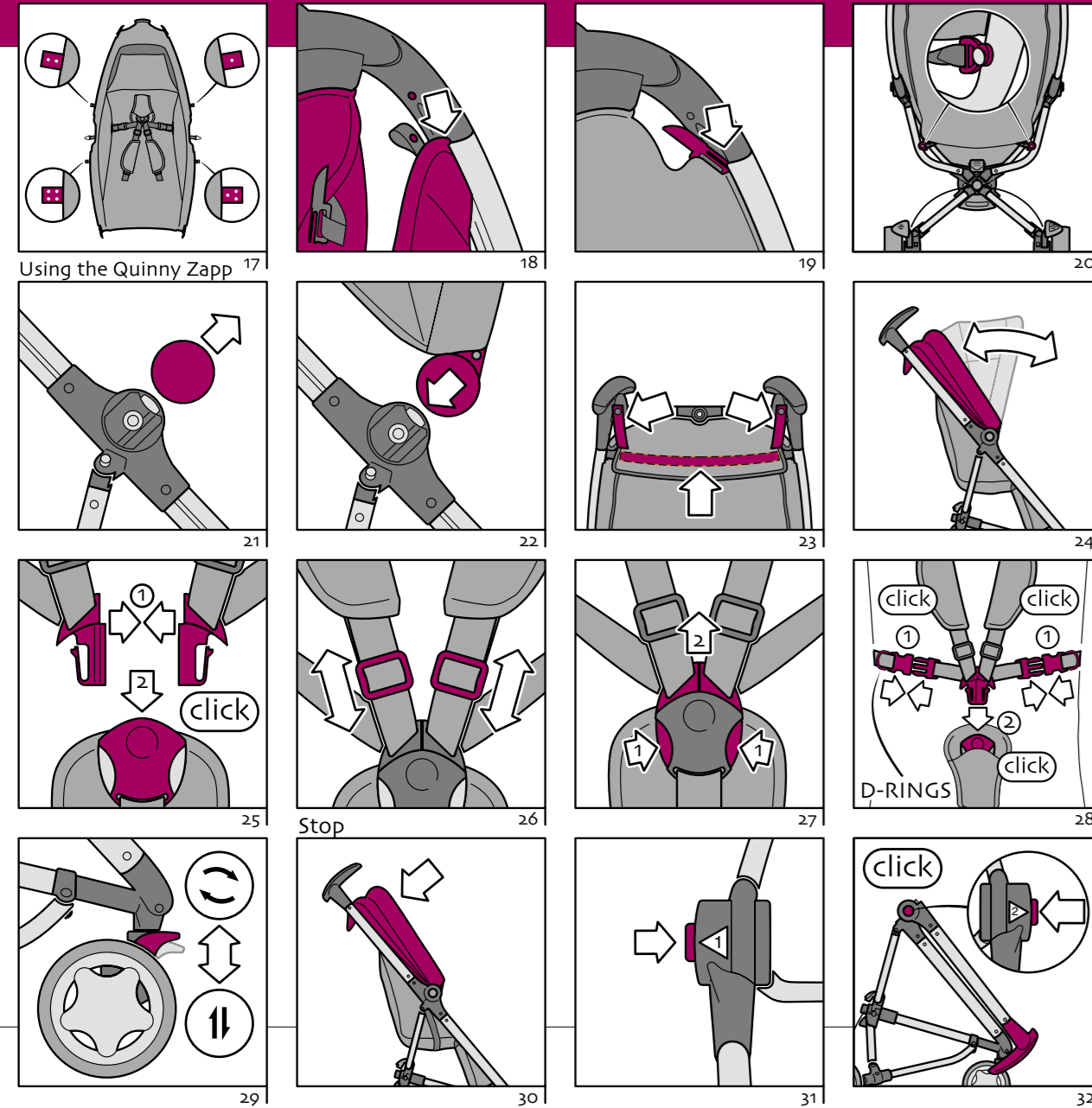
Quinny®  
zapp

Instructions for use & Warranty

|  |         |
|--|---------|
| Illustrations  | 3 - 5   |
| <b>Instructions for use &amp; Warranty</b>                     | 6 - 12  |
| Warning: Keep for future reference                             |         |
| <b>Mode d'emploi &amp; Garantie</b>                            | 13 - 19 |
| Avertissement: Conservez-le comme référence                    |         |
| <b>Gebrauchsanweisung &amp; Garantie</b>                       | 20 - 26 |
| Achtung: Bitte für künftige Benutzung aufbewahren              |         |
| <b>Gebruiksaanwijzing &amp; Garantie</b>                       | 27 - 33 |
| Waarschuwing: Bewaar als naslagwerk                            |         |
| <b>Manual de instrucciones y Garantía</b>                      | 34 - 40 |
| Consejo: Guárdelo para futuras consultas                       |         |
| <b>Istruzioni per l'uso &amp; Garanzia</b>                     | 41 - 47 |
| Attenzione: Conservare per eventuale consultazione futura      |         |
| <b>Modo de emprego &amp; Garantia</b>                          | 48 - 54 |
| Aviso: Leia atentamente as instruções e guarde-as para futuras |         |
| Addresses importers / suppliers                                | 55 - 56 |
| Notes  | 57 - 59 |
| Quinny Zapp legend   | 60      |



Quinny Zapp pushchair seat



**Congratulations**

Congratulations on your purchase of the Quinny Zapp.

Safety, comfort and user-friendliness played an important role in developing the Quinny Zapp. This product meets the most stringent safety requirements.

Studies have shown that a large percentage of pushchairs are not used correctly. Therefore, please take the time to read through this manual carefully. The Quinny Zapp can only offer your child optimum safety if used according to the instructions.

Continuous research by our product development department, the use of test panels and consumer feedback ensure that our products are always kept up-to-date in the field of child safety. If you have any questions or comments on the use of the Quinny Zapp, please do not hesitate to contact us.

**General Instructions**

- Use the Quinny Zapp for only one child at a time.
- The Quinny Zapp is suitable for children from birth to 4 years (maximum weight of 20 kg). The maximum weight allowance for use with a Maxi-Cosi child car seat is 13 kg. The Quinny Zapp is **not** suitable for use in combination with a prambody.
- It is recommended that you do not use the Quinny Zapp as a pushchair until your child is able to sit up unassisted, usually at around 6 months.
- The pushchair seat should not be used with children under 6 months.
- Make sure the Quinny Zapp is fully unfolded and locked before placing your child in it.
- Keep your child away from all moving parts when folding, unfolding or adjusting the pushchair.
- Always use the parking brake when parking the Quinny Zapp, even when standing still for only a few moments.
- Inspect and clean the Quinny Zapp frequently. Never use abrasive cleaners or lubricants.
- Never lift the Quinny Zapp or use escalators or stairs when there is a child in it.
- Use original accessories and manufacturer-approved parts only.
- Do not make any changes to this product. If you have any problems or complaints, contact your retailer or importer.
- To avoid the risk of suffocation, keep all plastic packaging materials out of the reach of children.
- The Quinny Zapp has been approved in accordance with NFS 54-001, EN 1888: 2003, BS 7409: 1996.

